



University Heart Center
Hamburg

GERMAN
AORTIC CENTER
HAMBURG



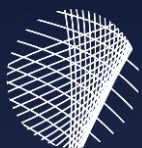
Edited Case:

Type B Dissection Management With Custom LSA Single Branch And False Lumen Endograft

Tilo Kölbel

German Aortic Center Hamburg
Dep. Of Vascular Diseases
University Heart & Vascular Center
University Medical Center Eppendorf

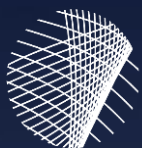
THE 26TH INTERNATIONAL EXPERTS SYMPOSIUM
CRITICAL ISSUES
IN AORTIC ENDOGRAFTING



Disclosures



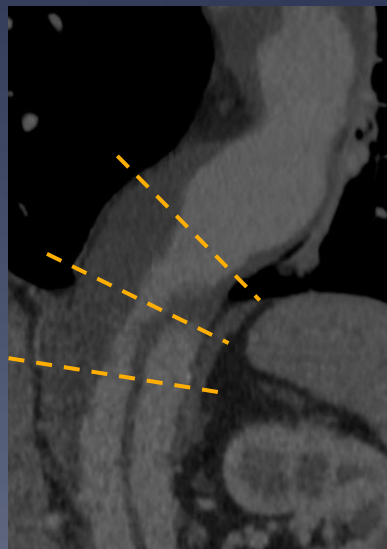
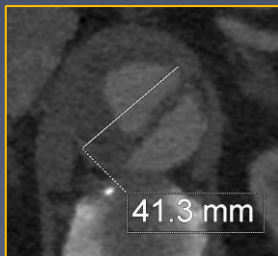
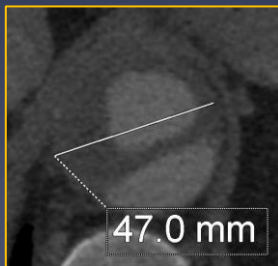
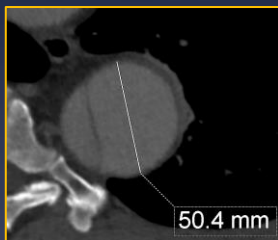
- * Consultant: Cook Medical, Philips, Getinge, Terumo Aortic, Arterica
- * Research-grants: Cook Medical, Philips, Terumo Aortic, Medtronic
- * Travel-grants: Cook Medical, Getinge
- * Speaking fees: Cook Medical, Philips, Getinge
- * Shares: Mokita-Medical, Arterica, Medyria, Siemens, Philips
- * IP: Cook Medical, Terumo Aortic, Mokita Medical
- * Royalties: Cook Medical, Terumo Aortic

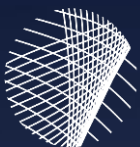


Morphology And Challenges



- * 65y-old male
- * Chronic TBAD
 - * Unknown time of event
- * Thoracoabdominal FL-aneurysm 6,5cm
- * Art. HT

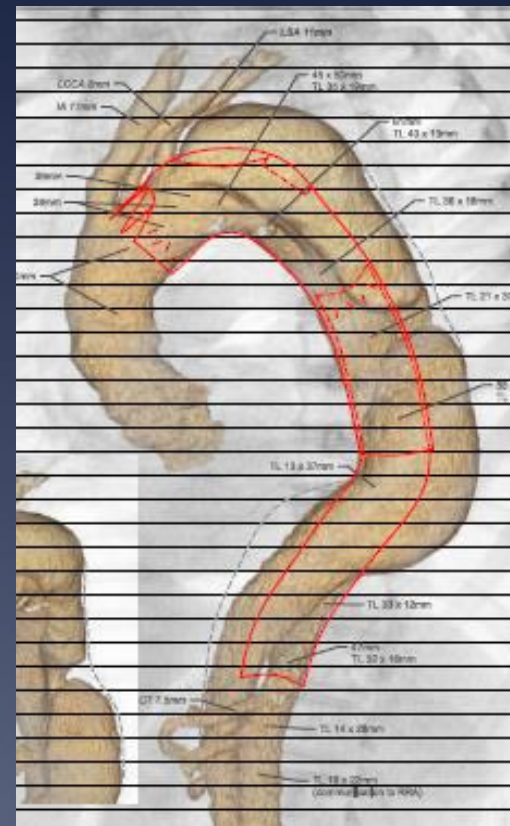
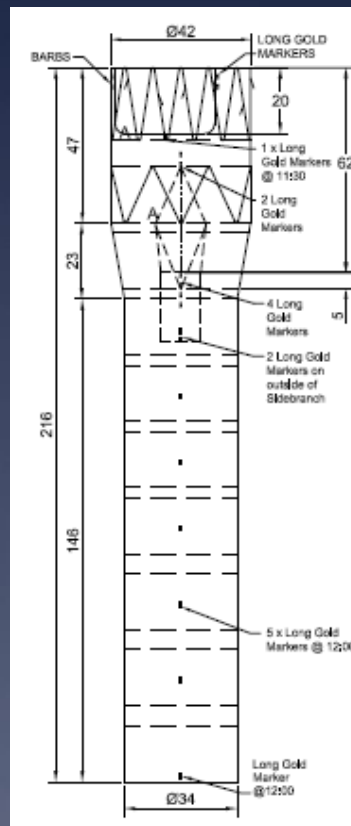
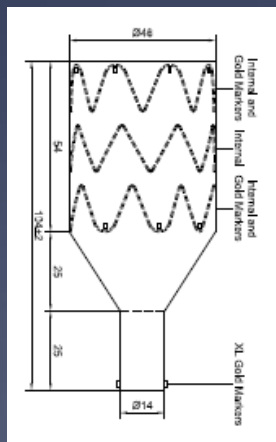




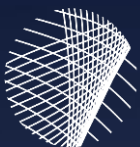
Treatment Plan



- * CMD LSA single branch TEVAR
- * Distal Extension
- * 2 Candy-plugs 46mm
- * CO₂-flushing



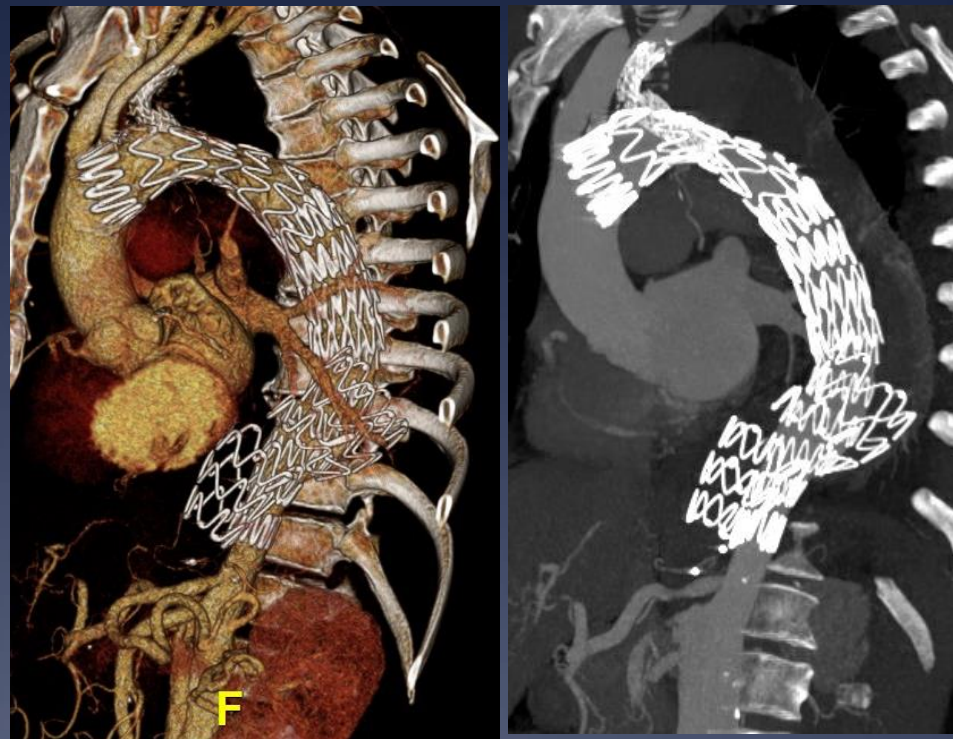




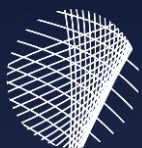
Postoperative Course



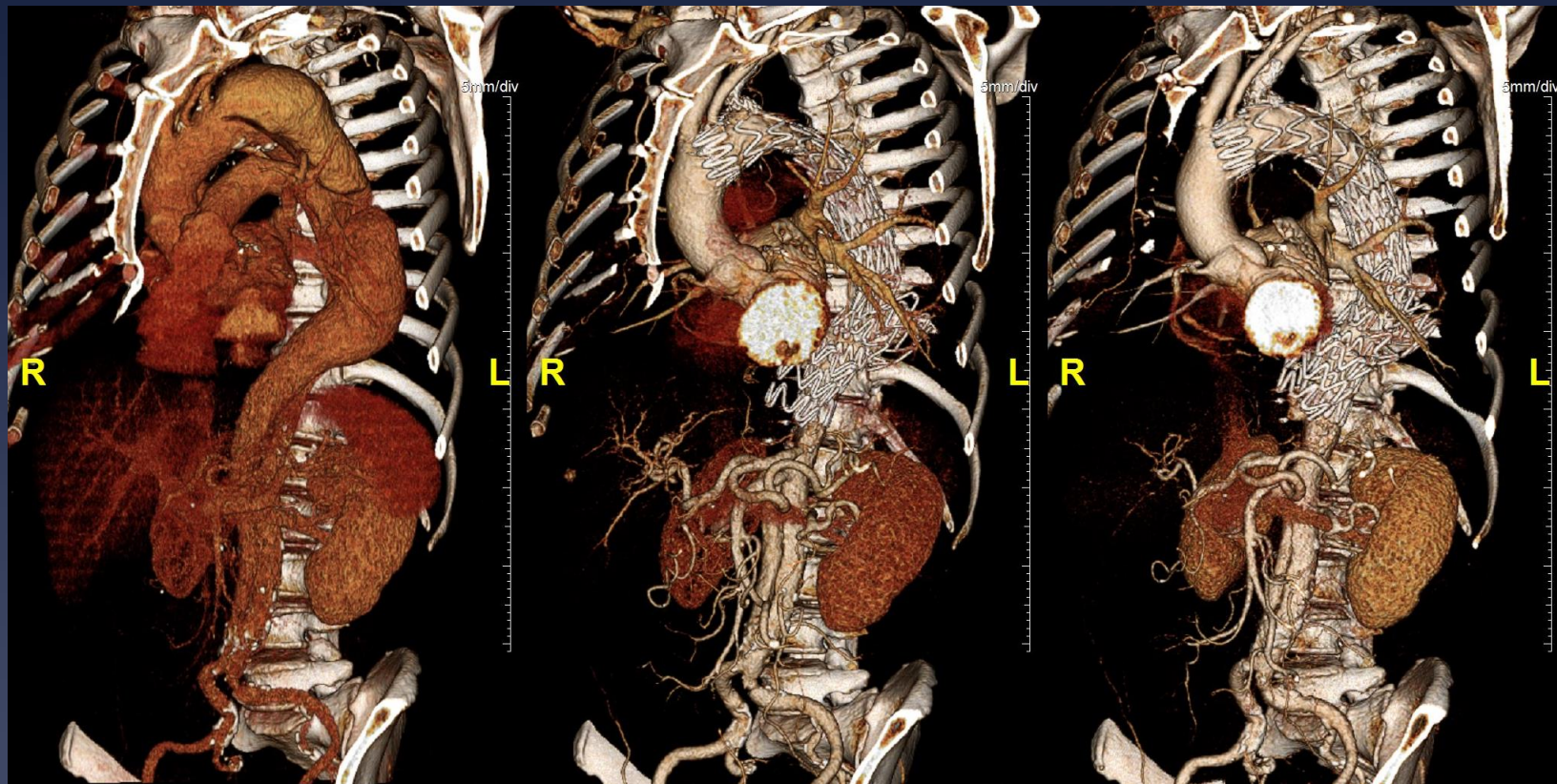
- * OR-time 95min
- * Fluoro-time 21min; DAP106 Gycm²;
- * Uncomplicated postoperative course
- * 2 days ICU
- * Discharge 4th postoperative day



Predischarge CTA



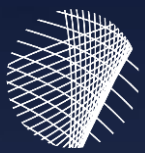
Follow Up



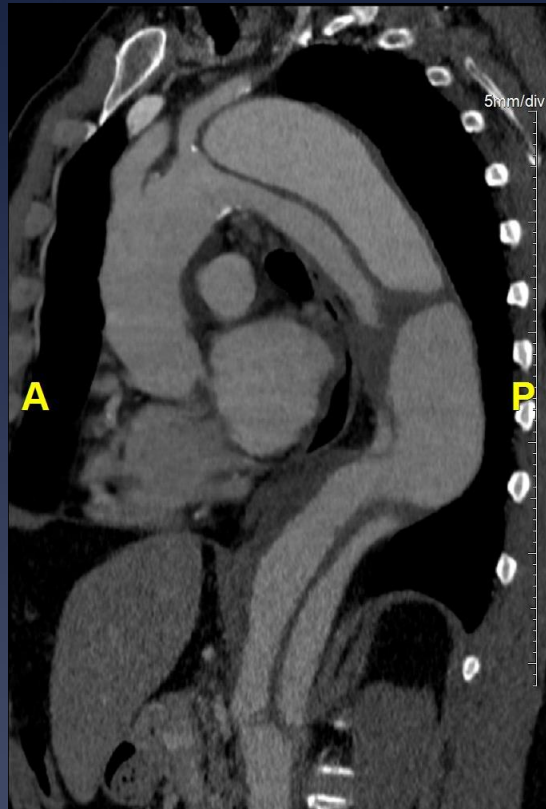
Preop.

3d postop.

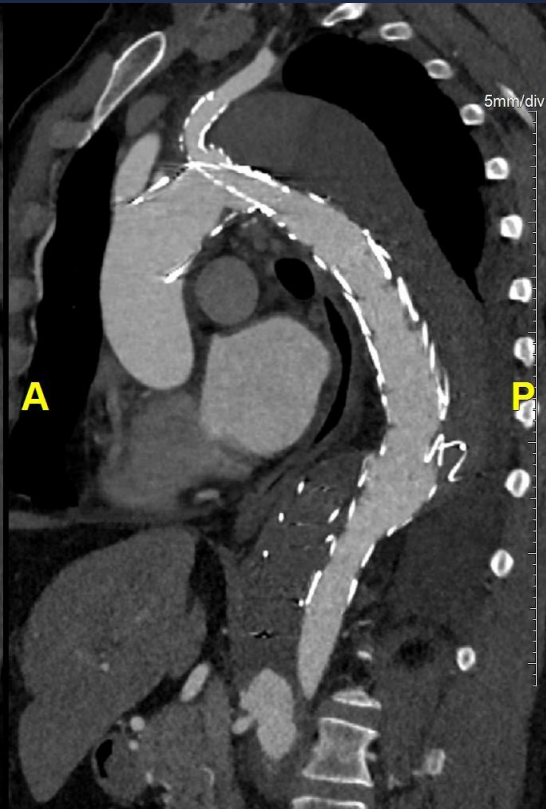
2y postop.



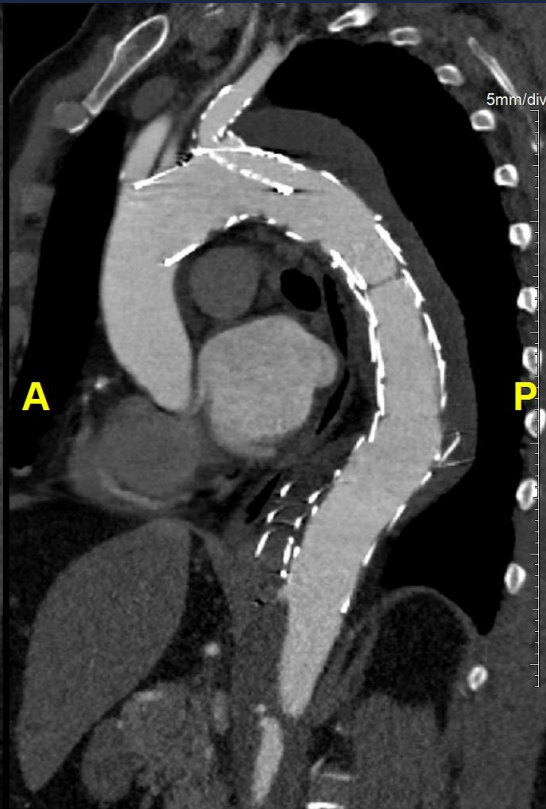
Follow Up



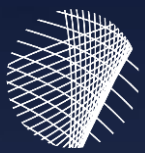
Preop.



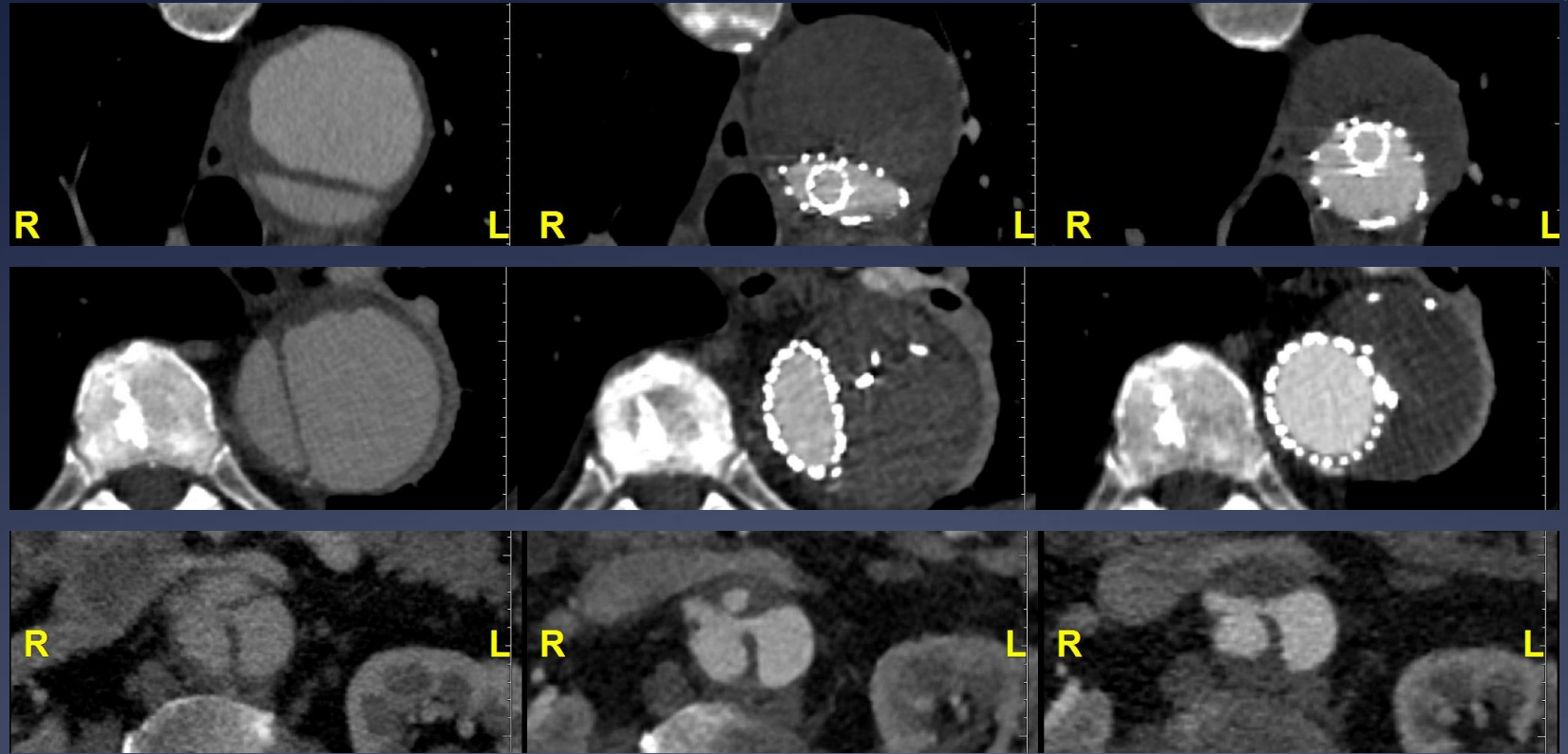
3d postop.



2y postop.



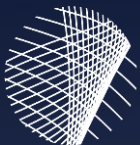
Follow Up



Preop.

3d postop.

2y postop.



Conclusion



- * LSA single branch design can improve proximal seal in TBAD with large proximal entry-tears.
- * Preloaded technology facilitates easy access to retrograde LSA branch.
- * False Lumen Endograft (Candy-Plug) effectively prevents retrograde flow in the false lumen with good remodelling.
- * Complex f/bEVAR can be prevented if abdominal aorta remains stable and $<5.5\text{cm}$.